



financeimpaq.mk

Evaluating & Enchancing Public Policies



The consultancy platform of Finance Think

ABOUT US

Vision

Our vision is to steer economic thinking for increased wellbeing tomorrow.

Mission

Finance Impaq aims to contribute to the process of economic & social policy formulation, implementation and evaluation in Macedonia and the region of the Western Balkan, through offering a set of integrated and methodologically-grounded services.

The platform is founded on the rational-comprehensive model of policymaking articulated in political science, whereby the flow of four distinctive phases is followed: problem identification; policy options formulation; selection and implementation; policy monitoring and evaluation.

Principles and values

Client-oriented service. We embed quality in in our mission to provide solutions for the economic & social policy problems by applying fundamental theoretical knowledge, skills and expertise and abiding to the principles of transparency and accountability.

Innovative approaches. We adopt the frontier approaches in the policy analysis and evaluation. We are open to new ideas and possess the utmost passion for exploring new horizons in the delivery of our services, to align them with the needs of our clients.

Learning organization. We permanently learn from each other, our partners, clients and leading experts in the field.

SERVICES



IMPACT EVALUATION

High-quality assessment of economic policies

Main Concept



Randomized Control Trials



The units of analysis (frequently being people) are randomly assigned to a so-called treatment group, i.e. the group exposed to certain policy intervention (e.g. active labor market policy, or training), while the rest serve a control group. Then, pre-selected outcomes (e.g. employment or wages) are compared between the two groups.



Quasi - Experimental Methods



Identification of a comparison group that is as similar as possible to the treatment group. The comparison group captures what would have been the outcomes had the program/policy not been implemented (the so-called counterfactual).




Non - Experimental Methods



Instrumental variable estimation and sample selection models (also known as Heckman models). These regression approaches take account of selection bias.

SERVICES



Monitoring & Support of Policy Formulation

- Field investigation of the environment (systems and practices)
 - Questionnaire and sample design
- Documentary screening of regulations, practices, past options
 - Conduct of field screening to identify policy options
- Direct work with stakeholders (e.g. employees of the public administration) to identify obstacles and bottlenecks



Field Screening and Policy Formulation

- Assistance in drafting rules and regulations
- Hands-on support in field policy implementation
 - Delivery of capacity-building activities to secure proper policy implementation
 - Budgeting the costs of the policy
 - Monitoring of & reporting on policy field implementation



Stata Programming & Data Handling

- Summary statistics, cross-tabulations
- Simple and complex regression estimations
- Forecasting and simulations (e.g. Monte Carlo; simulation of the effects of proposed policies)
 - Graphical visualizations
- Work with large surveys (e.g. LFS, HBS, SILC)



Cutting-edge trainings

- Data analysis for policy purposes
 - Tools for collecting data
- Data-driven advocacy and visualization skills
 - Cost – Benefit analysis
- Data analysis in SPSS / Data analysis in STATA

OUR TEAM

The economists of Finance Impaq have gone through a 3-month rigorous training on impact evaluation by the Partnership for Economic Policies, Canada



FINANCE IMPAQ

St. Frederik Shopen 1/2 1000 Skopje

+389 2 6156 168

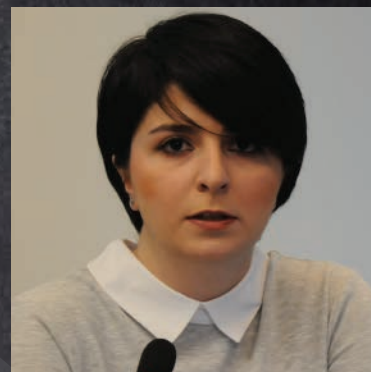
info@financethink.mk

financeimpaq.mk



Blagica Petreski

Blagica is the Founder of Finance Impaq. She has been actively involved in the development agenda of international organizations related to impact evaluation of policies, field diagnostics and direct work with government agencies.



Despina Tumanoska

Despina applies a variety of methods for experimental and non-experimental impact evaluations, as well directly worked on regulatory screening, sample and questionnaire design and delivery of capacity building activities.



Tereza Kochovska

Tereza provides the on-the-spot support in the implementation of various policies and measures, as well actively contributes to data collection through various methods. She is skilled in budgeting issues pertinent to public policies.



Marjan Petreski

Marjan is applied econometrician. He authored the design of impact evaluation of active labor market policies in Macedonia. He is skilled with an array of quantitative skills on regressions, simulations and forecasting.